



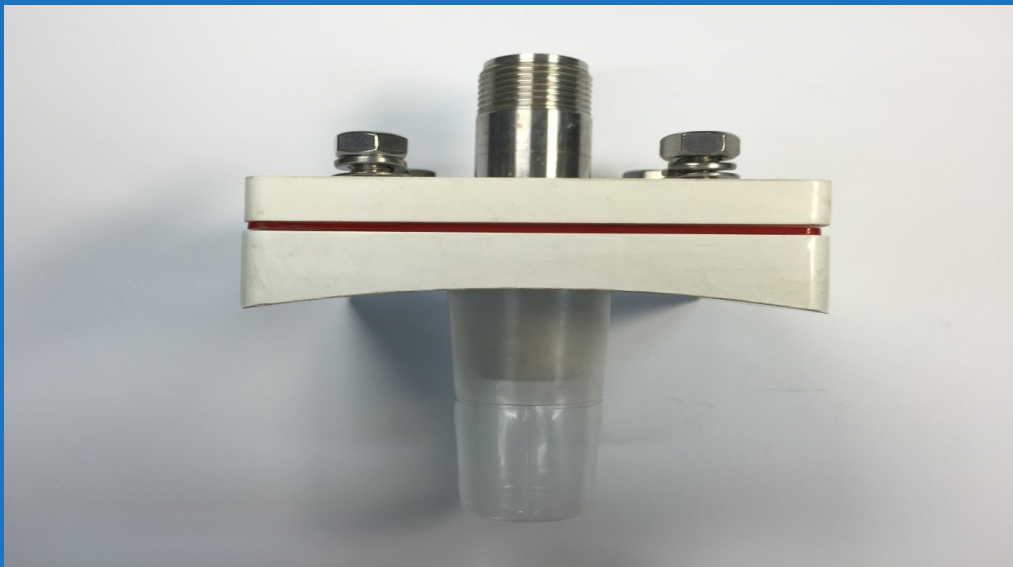
- Approvals -

DUCTFLEX 32 - Hose : 31.8mm(32A)

(1) Threaded Type

Threaded	UL(C)	FM	VdS
DUCTFLEX SJ32B-T800	N/A	FM	N/A
DUCTFLEX SJ32B-T1000			
DUCTFLEX SJ32B-T1200			
DUCTFLEX SJ32B-T1500			
DUCTFLEX SJ32B-T1800			

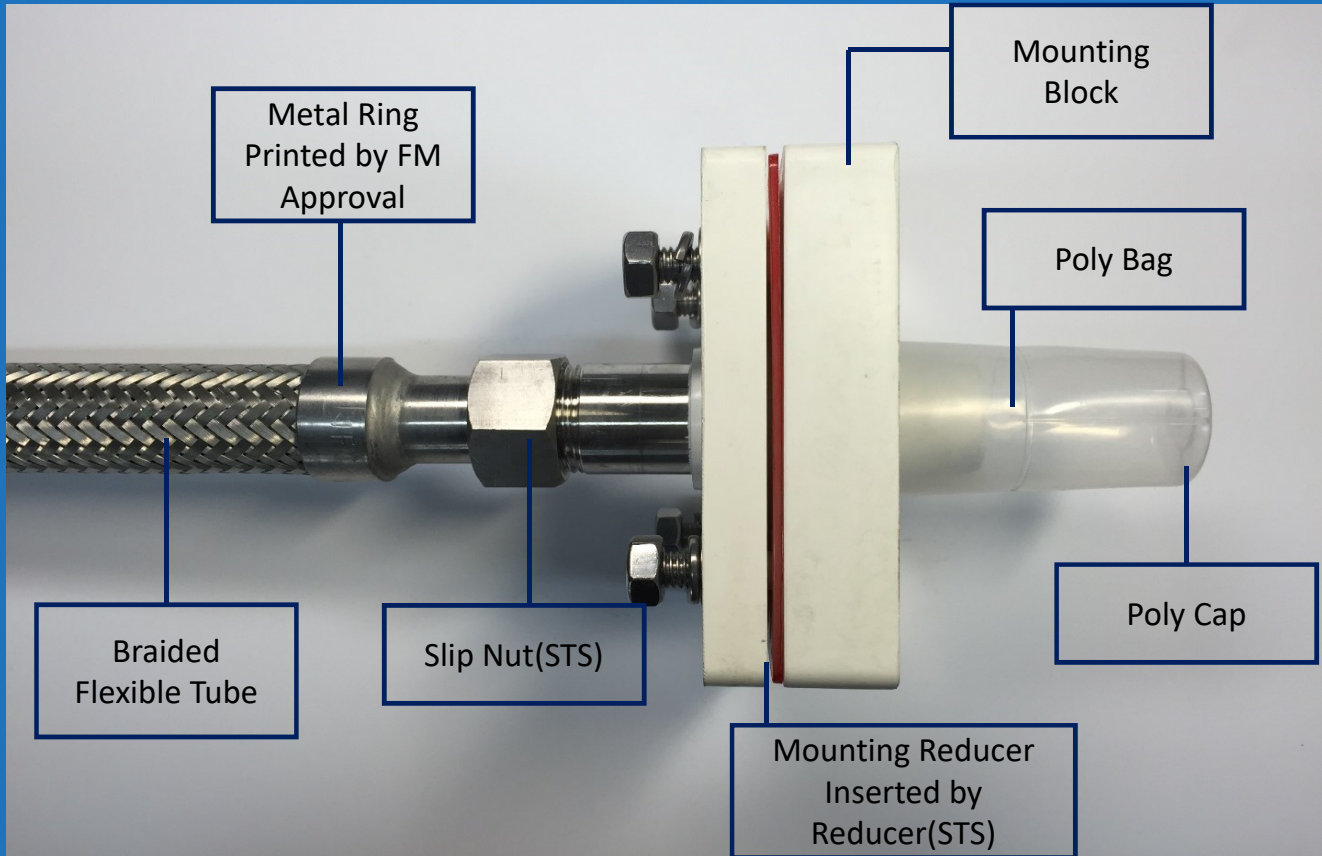
DUCTFLEX Fume Duct Mount



Part	Material	Quantity
Mounting Block	SMC or BMC	1
Mounting Reducer	SMC or BMC	1
Washer	STS304	4
Bolt	STS304	4
Nut	STS304	4
O-Ring	VITON	2
Poly Bag	PE	1
Poly Cap	PE	1



- Specification -



Hose Diameter	32A : DUCTFLEX 32	I.D. : 31.2mm O.D. : 31.8mm
Hose Type	Braided Type / Threaded Type	
Max. Ambient Temperature	225°F (107°C)	
Max. Working Pressure	175 psi (Braided)	
Minimum Bend Radius	8 Inch (FM)	
K-Factor	1/2" Outlet	5.6 gpm
	3/4" Outlet	8.0 gpm
Length Available	800mm, 1000mm, 1200mm, 1500mm, 1800mm	
Connection	Inlet	1", NPT/BSPT
	Outlet	1/2" or 3/4", NPT/BSPT



- Technical Data -

(1) FM 32 - DUCTFLEX SJ32B-TXXX

Model	NPT in.	K-Factor	Minimum Bend Radius in.(mm)	Number of Bends	Rated Working Pressure psi (kPa)	Hose Assembly length in.(mm)	Equivalent Length of 1 in. Schedule 40 Pipe, ft(m)
DUCTFLEX SJ32B-T800	1/2	5.6	8(200)	1	175(1205)	31(800)	18.7(5.7)
DUCTFLEX SJ32B-T1000	1/2	5.6	8(200)	2	175(1205)	39(1000)	23.2(7.0)
DUCTFLEX SJ32B-T1200	1/2	5.6	8(200)	2	175(1205)	47(1200)	25.9(7.9)
DUCTFLEX SJ32B-T1500	1/2	5.6	8(200)	3	175(1205)	59(1500)	31.9(9.7)
DUCTFLEX SJ32B-T1800	1/2	5.6	8(200)	4	175(1205)	71(1800)	35.1(10.7)
DUCTFLEX SJ32B-T800	3/4	8.0	8(200)	1	175(1205)	31(800)	10.8(3.3)
DUCTFLEX SJ32B-T1000	3/4	8.0	8(200)	2	175(1205)	39(1000)	14.8(4.5)
DUCTFLEX SJ32B-T1200	3/4	8.0	8(200)	2	175(1205)	47(1200)	18.7(5.7)
DUCTFLEX SJ32B-T1500	3/4	8.0	8(200)	3	175(1205)	59(1500)	22.9(6.9)
DUCTFLEX SJ32B-T1800	3/4	8.0	8(200)	4	175(1205)	71(1800)	26.2(7.9)